



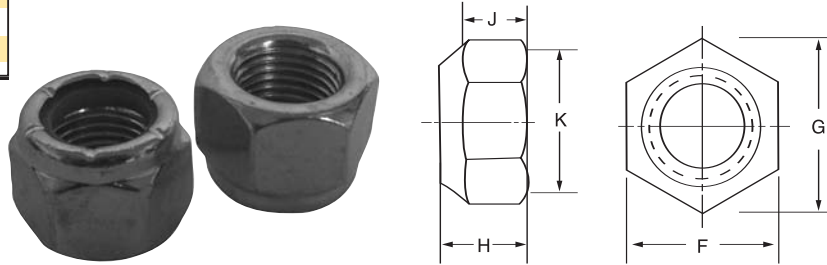
CLAVOS NACIONALES
CONQUISTANDO EL FUTURO

TUERCA SEGURIDAD CON INSERTO DE NYLON INOXIDABLE 18-8 (T-304) CUERDA ESTÁNDAR

CUERDA ESTÁNDAR INOXIDABLE

| Código | Medida |
|-----------|-----------|
| 136181510 | 10 - 24 |
| 136181515 | 1/4 - 20 |
| 136181520 | 5/16 - 18 |
| 136181525 | 3/8 - 16 |
| 136181530 | 1/2 - 13 |
| 136181535 | 5/8 - 11 |
| 136181540 | 3/4 - 10 |

DIMENSIONES: ANSI B 18.2.2
ESPECIFICACIÓN: SAE 30304
MATERIAL: Acero inoxidable 18-8 (T-304)
DUREZA ROCKWELL B: 85 HRB mínimo
CUERDA: Estándar Ajuste 2B
ACABADO: • Acero inoxidable



| Diámetro Nominal | | F | | | G | | H | | J | K | |
|------------------|------|-----------------------|-------|-------|--------------------------|-------|--------|-------|-----------------|------------------------------------|-------|
| | | Distancia entre caras | | | Distancia entre esquinas | | Altura | | Altura hexágono | Diámetro de la superficie de apoyo | |
| Pulg | mm | Nom | Max | Min | Max | Min | Max | Min | Min | Max | Min |
| 10 | 4.8 | 1/8 | 0.375 | 0.365 | 0.433 | 0.416 | 0.219 | 0.203 | 0.138 | 0.352 | 0.312 |
| 1/4" | 6.3 | 7/16 | 0.438 | 0.428 | 0.505 | 0.488 | 0.288 | 0.212 | 0.145 | 0.438 | 0.416 |
| 5/16" | 7.9 | 1/2 | 0.502 | 0.489 | 0.577 | 0.557 | 0.336 | 0.258 | 0.166 | 0.502 | 0.475 |
| 3/8" | 9.5 | 9/16 | 0.564 | 0.551 | 0.650 | 0.628 | 0.415 | 0.320 | 0.198 | 0.564 | 0.534 |
| 7/16" | 11.1 | 11/16 | 0.689 | 0.675 | 0.794 | 0.768 | 0.463 | 0.365 | 0.223 | 0.689 | 0.653 |
| 1/2" | 12.7 | 3/4 | 0.752 | 0.736 | 0.866 | 0.840 | 0.573 | 0.427 | 0.262 | 0.752 | 0.712 |
| 9/16" | 14.2 | 7/8 | 0.877 | 0.861 | 1.010 | 0.982 | 0.621 | 0.473 | 0.286 | 0.877 | 0.830 |
| 5/8" | 15.8 | 15/16 | 0.939 | 0.922 | 1.083 | 1.051 | 0.731 | 0.535 | 0.329 | 0.939 | 0.890 |
| 3/4" | 19.0 | 1-1/8 | 1.127 | 1.088 | 1.299 | 1.240 | 0.827 | 0.617 | 0.382 | 1.127 | 1.069 |

TUERCAS AUTOMOTRICES

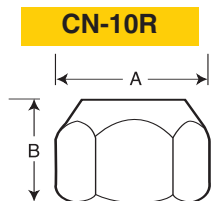


CLAVOS NACIONALES
CONQUISTANDO EL FUTURO

TUERCAS AUTOMOTRICES

CÓNICA

| Código | Descripción | Medida hexágono A x B | Aplicación | Precio x pieza | Empaque |
|-----------|-----------------|-----------------------|---|----------------|---------|
| 100402510 | CN-10R 7/16-20 | 3/4" x 9/16" | Chevrolet, Chrysler, Nissan | 11.36 | 500 |
| 100402520 | CN-12R 1/2-20 | 3/4" x 9/16" | Chrysler, Ford, Mitsubishi, Vam | 11.36 | 500 |
| 100402530 | CN-14R 1/2-20 | 13/16" x 5/8" | Chevrolet, Chrysler, Ford, Mitsubishi, Vam | 14.88 | 400 |
| 100402545 | CN-18R 9/16-18 | 1" x 11/16" | Chevrolet, Ford | 26.15 | 250 |
| 100402550 | CN-21R 9/16-18 | 1 1/16" x 21/32" | Chevrolet, Chrysler, Ford | 27.29 | 200 |
| 100402555 | CN-22L 9/16-18 | 1 1/16" x 21/32" | Ford | 27.29 | 200 |
| 100402570 | CN-27R 5/8-18 | 1 1/16" x 21/32" | Chevrolet, Ford | 26.85 | 200 |
| 100402580 | CN-32R 3/4-16 | 1 1/2" x 7/8" | Chevrolet, Chrysler, Ford | 66.82 | 75 |
| 100402590 | CN-40R M12x1.5 | 3/4" x 9/16" | Chevrolet, Chrysler, Nissan, Volkswagen, Renault, Honda, Toyota, Ford, Mitsubishi | 11.45 | 500 |
| 100402600 | CN-41R M12x1.25 | 13/16" x 5/8" | Chevrolet, Nissan | 14.88 | 400 |
| 100402605 | CN-41E M12x1.5 | 13/16" x 20.6 mm | Mazda | 14.35 | 400 |
| 100402615 | CN-44A 1/2-20 | M27x2x28.5 mm | Suburban | 52.56 | 150 |

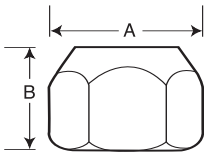




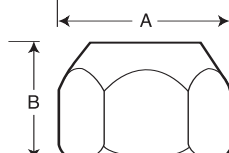
CÓNICA

| Código | Descripción | Medida hexágono A x B | Aplicación | Precio x pieza | Empaque |
|-----------|----------------|-----------------------|------------|----------------|---------|
| 100402620 | CN-45R M12x1.5 | M22x2x19-28 mm | Cutlass | 39.88 | 200 |
| 100402630 | CN-46A M12-1.5 | 19 x 20.6 mm | Codigo K | 30.64 | 200 |
| 101500020 | ZN-9/16-18-L | 1 1/16" x 21/32" | Ford | 24.15 | 200 |

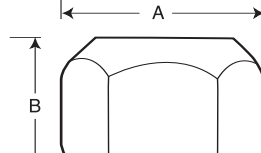
CN-12R



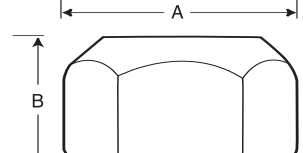
CN-14R



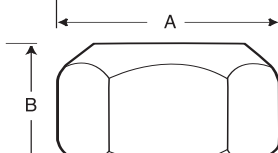
CN-18R



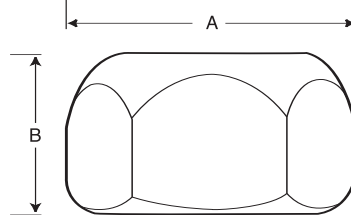
CN-21R/22L



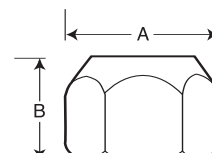
CN-27R



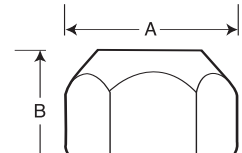
CN-32R



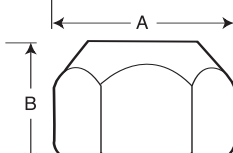
CN-40R



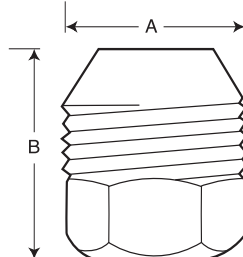
CN-41R



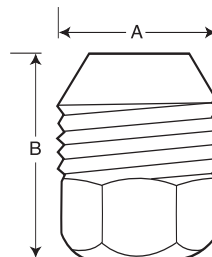
CN-41E



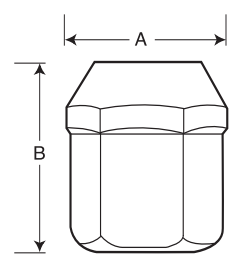
CN-44A



CN-45R

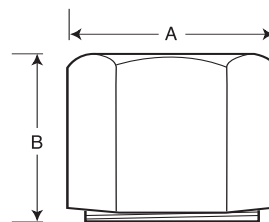


CN-46A



ALTA DE MUELLE

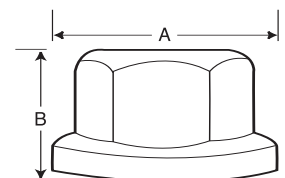
| Código | Descripción | Medida hexágono A x B | Precio x pieza | Empaque |
|-----------|----------------|-----------------------|----------------|---------|
| 100402700 | CN-49R 9/16-18 | 7/8" x 11/16" | 17.87 | 250 |
| 100402705 | CN-50R 5/8-18 | 15/16" x 3/4" | 23.51 | 200 |
| 100402710 | CN-51R 3/4-16 | 1 1/8" x 1" | 36.01 | 100 |
| 100402715 | CN-52R 7/8-14 | 1 1/4" x 1 1/8" | 54.94 | 75 |
| 100402720 | CN-53R 1-14 | 1 1/2" x 1 1/4" | 105.47 | 50 |



CAMPANA

| Código | Descripción | Medida hexágono A x B | Aplicación | Precio x pieza | Empaque |
|-----------|------------------|-----------------------|----------------------------|----------------|---------|
| 100402840 | CN-20R 9/16-18 | 7/8" x 3/4" | General Motor doble rodado | 41.64 | 200 |
| 100402845 | CN-29R 5/8-18 | 1 1/8" x 1 1/16" | General Motor doble rodado | 89.80 | 75 |
| 100402847 | CN-29L 5/8-18 | 1 1/8" x 1 1/16" | General Motor doble rodado | 59.90 | 75 |
| 100402850 | CN-31R 11/16-16 | 1 1/8" x 1 1/16" | General Motor doble rodado | 93.85 | 75 |
| 100402855 | CN-35R 3/4-16 | 1 1/8" x 1 1/16" | Ford doble rodado | 86.37 | 75 |
| 100402860 | CN-42R M14x1.5 | 19 x 20.6 mm | Combi Volkswagen | 33.10 | 250 |
| 100402865 | CN-43M M12x1.25 | 19 x 22 mm | Renault, R-12, R-18 | 33.46 | 200 |
| 100402870 | CN-133R 1 1/8-16 | 1 1/2" x 1 1/8" | Flotante rin de acero | 166.75 | 50 |

CN-20R

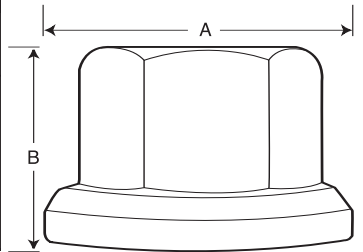




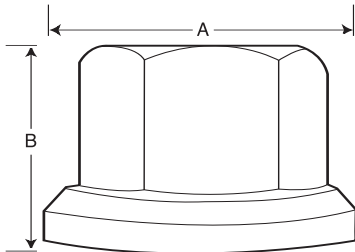
CAMPANA

| Código | Descripción | Medida hexágono A x B | Aplicación | Precio x pieza | Empaque |
|-----------|------------------|-----------------------|----------------------------|----------------|---------|
| 100402873 | CN-134L 1 1/8-16 | 1 1/2" x 1 1/8" | Flotante rin de acero | 166.75 | 50 |
| 100402875 | CN-133AR M22x1.5 | 30 x 22 mm | Mercedes Benz rin de acero | 160.24 | 100 |
| 100402880 | CN-139R M22x1.5 | 33 x 30 mm | Flotante rin de acero | 123.00 | 50 |
| 100402890 | CN-141R M14x1.5 | 26.6 x 39 mm | Chevrolet Pickup | 42.17 | 50 |
| 100402895 | CN-142R 9/16-18 | 7/8" x 1 1/16" | Flotante Ford, F-350 | 112.69 | 100 |
| 100402905 | CN-139AR 7/8-11 | 33 x 31 mm | Flotante autobus Scandia | 114.10 | 50 |

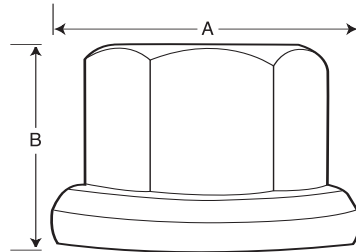
CN-29R/29L



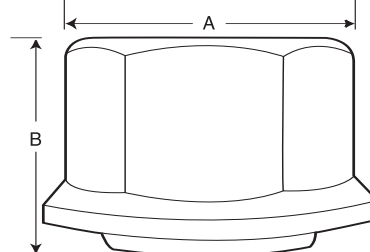
CN-31R



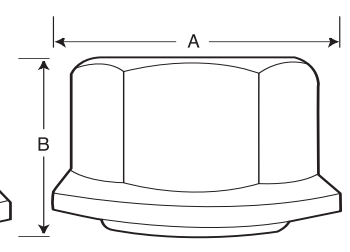
CN-35R



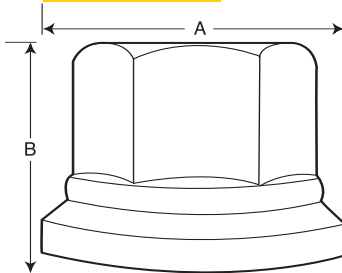
CN-133R/134L



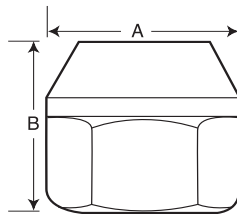
CN-133AR



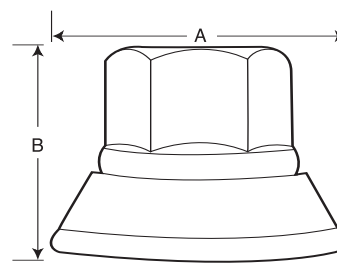
CN-139R



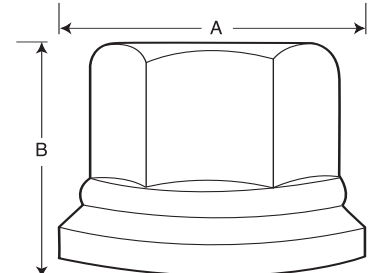
CN-141R



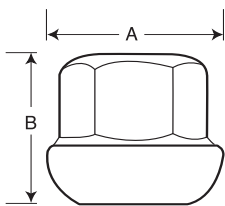
CN-142R



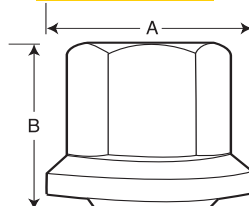
CN-139AR



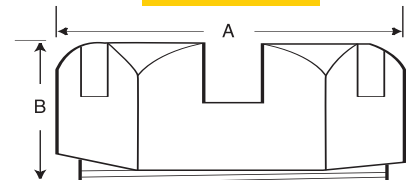
CN-42R



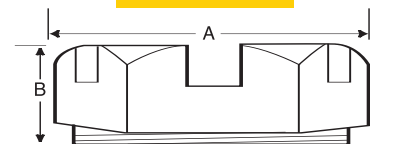
CN-43M



CN-113R



CN-114R

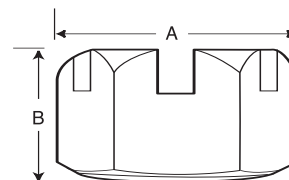


PIÑÓN

| Código | Descripción | Medida hexágono A x B | Aplicación | Precio x pieza | Empaque |
|-----------|------------------|-----------------------|---------------|----------------|---------|
| 100402775 | CN-113R 1 1/8-16 | 1 5/8" x 3/4" | General Motor | 84.52 | 100 |
| 100402780 | CN-114R 1 -20 | 1 1/2" x 17/32" | Ford 600 | 54.15 | 100 |

CASTILLO

| Código | Descripción | Medida hexágono A x B | Precio x pieza | Empaque |
|-----------|----------------|-----------------------|----------------|---------|
| 100402740 | CN-56R 1/2-20 | 3/4" x 7/16" | 14.26 | 600 |
| 100402745 | CN-57R 9/16-18 | 7/8" x 1/2" | 17.17 | 300 |
| 100402760 | CN-60R 7/8-14 | 1 1/4" x 3/4" | 50.58 | 100 |
| 100402765 | CN-61R 1-14 | 1 1/2" x 7/8" | 60.31 | 60 |



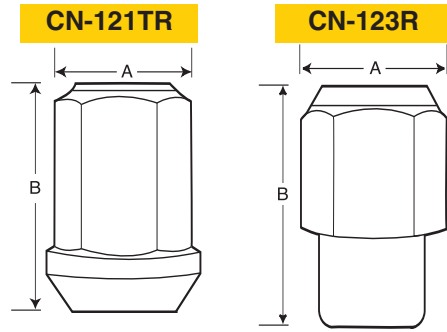


CLAVOS NACIONALES
CONQUISTANDO EL FUTURO

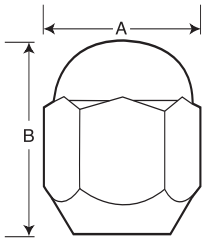
TUERCAS AUTOMOTRICES

RIN DE ACERO

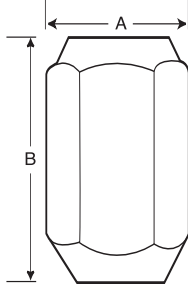
| Código | Descripción | Medida hexágono A x B | Precio x pieza | Empaque |
|-----------|------------------|-----------------------|----------------|---------|
| 100402950 | CN-121TR M12x1.5 | 20.6 x 39 mm | 41.64 | 150 |
| 100402970 | CN-123R 1/2-20 | 13/16" x 1 7/16" | 48.51 | 150 |



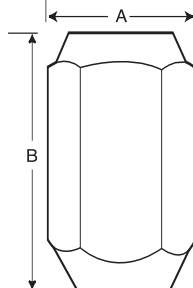
CN-119R



CN-120R



CN-125R



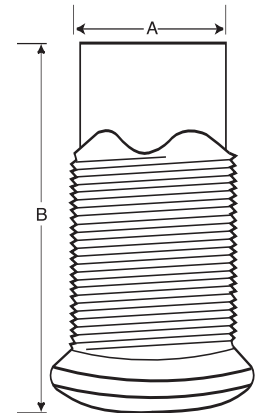
CROMADA DE LUJO

| Código | Descripción | Medida hexágono A x B | Precio x pieza | Empaque |
|-----------|------------------|-----------------------|----------------|---------|
| 100402925 | CN-120R M12x1.25 | 20.6 x 39 mm | 48.71 | 150 |
| 100402940 | CN-125R 1/2-20 | 13/16" x 1 5/8" | 41.56 | 150 |
| 100402945 | CN-119R M12X1.25 | 20.6 x 30 mm | 41.47 | 200 |

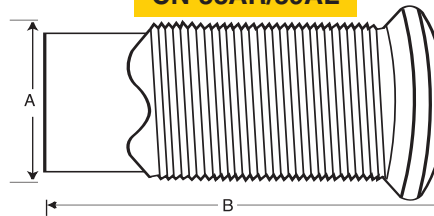
CAPUCHON

| Código | Descripción | Medida hexágono A x B | Tipo | Precio x pieza | Empaque |
|-----------|------------------|-----------------------|-------------------------------|----------------|---------|
| 100403060 | CN-38R 1 1/8-16 | 3/16" x 2 3/8" | Corto tropicalizado derecho | 62.53 | 50 |
| 100403065 | CN-38R 1 1/8-16 | 3/16" x 2 3/8" | Corto negro derecho | 62.53 | 50 |
| 100403075 | CN-39L 1 1/8-16 | 3/16" x 2 3/8" | Corto tropicalizado izquierdo | 62.53 | 50 |
| 100403080 | CN-39L 1 1/8-16 | 3/16" x 2 3/8" | Corto negro izquierdo | 62.53 | 50 |
| 100403105 | CN-38AR 1 1/8-16 | 3/16" x 2 3/4" | Largo tropicalizado derecho | 109.35 | 40 |
| 100403110 | CN-38AR 1 1/8-16 | 3/16" x 2 3/4" | Largo negro derecho | 109.35 | 40 |
| 100403115 | CN-39AL 1 1/8-16 | 3/16" x 2 3/4" | Largo tropicalizado izquierdo | 109.35 | 40 |
| 100403120 | CN-39AL1 1/8-16 | 3/16" x 2 3/4" | Largo negro izquierdo | 109.35 | 40 |

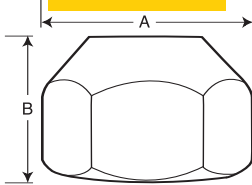
CN-38R/39L



CN-38AR/39AL



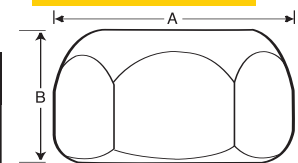
CN-23R



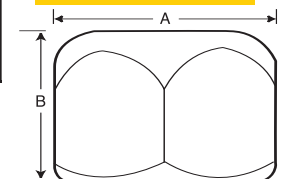
CÓNICA AGRÍCOLA

| Código | Descripción | Medida hexágono A x B | Aplicación | Precio x pieza | Empaque |
|-----------|----------------|-----------------------|------------|----------------|---------|
| 100402635 | CN-23R 9/16-18 | 1 1/16" x 3/4" | Tractores | 31.08 | 200 |

CN-36R/37L



CN-36M/37M



CÓNICA CAPUCHÓN

| Código | Descripción | Medida hexágono A x B | Tipo | Precio x pieza | Empaque |
|-----------|-----------------|-----------------------|-------------------------|----------------|---------|
| 100402645 | CN-36M 1 1/8-16 | 1 1/2" x 1" | Tropicalizada derecha | 37.85 | 75 |
| 100402650 | CN-37M 1 1/8-16 | 1 1/2" x 1" | Tropicalizada izquierda | 37.85 | 75 |
| 100403070 | CN-36R 1 1/8-16 | 1 1/2" x 7/8" | Negra derecha | 41.10 | 75 |
| 100403085 | CN-37L 1 1/8-16 | 1 1/2" x 7/8" | Negra izquierda | 41.10 | 75 |



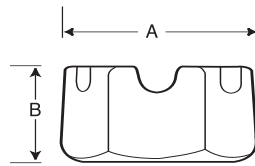
CLAVOS NACIONALES
CONQUISTANDO EL FUTURO

TUERCAS AUTOMOTRICES

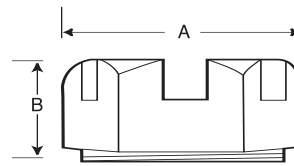
MANGO

| Código | Descripción | Medida hexágono A x B | Aplicación | Precio x pieza | Empaque |
|-----------|----------------|-----------------------|---------------|----------------|---------|
| 100402795 | CN-105R 3/4-16 | 1 1/8" x 17/32" | Ford | 34.86 | 100 |
| 100402805 | CN-107R 3/4-16 | 1 1/16" x 33/64" | General Motor | 29.93 | 150 |
| 100402815 | CN-109R 7/8-14 | 1 1/4" x 7/8" | Ford | 50.71 | 100 |

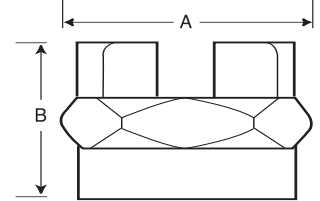
CN-105R



CN-107R

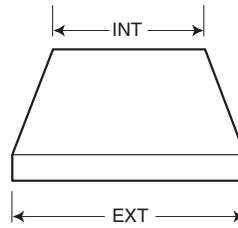


CN-109R



CONO PARA BIRLO DE FLECHA

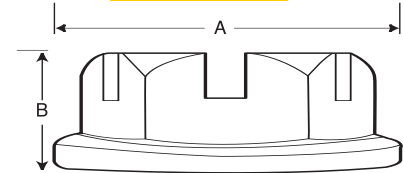
| Código | Descripción | Diámetro del cono | Precio x pieza | Empaque |
|-----------|-------------|-----------------------|----------------|---------|
| 100403035 | CN-144 | 7/16" int x 3/4" ext | 9.66 | 700 |
| 100403040 | CN-145 | 1/2" int x 13/16" ext | 12.23 | 600 |
| 100403045 | CN-146 | 9/16" int x 7/8" ext | 17.75 | 500 |
| 100403050 | CN-147 | 5/8" int x 1" ext | 19.82 | 400 |
| 100403055 | CN-148 | 3/4" int x 1 1/8" ext | 27.61 | 300 |



FLECHA LATERAL

| Código | Descripción | Medida hexágono A x B | Aplicación | Precio x pieza | Empaque |
|-----------|-----------------|-----------------------|------------|----------------|---------|
| 100402835 | CN-115R M24X1.5 | 36.5 X 16.6 mm | Volkswagen | 110.14 | 75 |

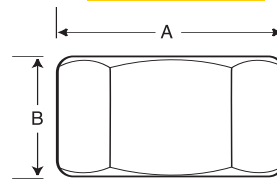
CN-115R



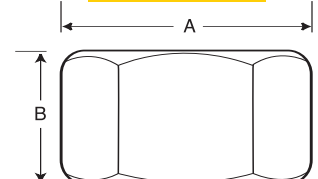
ARTILLERÍA

| Código | Descripción | Medida hexágono A x B | Precio x pieza | Empaque |
|-----------|---------------|-----------------------|----------------|---------|
| 100402655 | CN-26R 5/8-11 | 1 1/16" x 5/8" | 22.10 | 200 |
| 100402660 | CN-34R 3/4-10 | 1 1/4" x 3/4" | 44.46 | 100 |

CN-26R



CN-34R



VÁLVULAS DE ESFERA Ó BOLA



CLAVOS NACIONALES
CONQUISTANDO EL FUTURO

VÁLVULAS DE BRONCE CROMADO

ROSCADAS

| Código | Longitud | | Precio x pieza |
|-----------|----------|------|----------------|
| | pulg | mm | |
| 118020210 | 1/4" | 6.3 | 139.25 |
| 118020220 | 3/8" | 9.5 | 139.25 |
| 118020230 | 1/2" | 12.7 | 225.38 |
| 118020240 | 3/4" | 19.0 | 328.74 |
| 118020250 | 1" | 25.4 | 479.47 |
| 118020260 | 1 1/4" | 31.8 | 769.45 |
| 118020270 | 1 1/2" | 38.1 | 1,065.17 |
| 118020280 | 2" | 50.8 | 1,754.23 |

